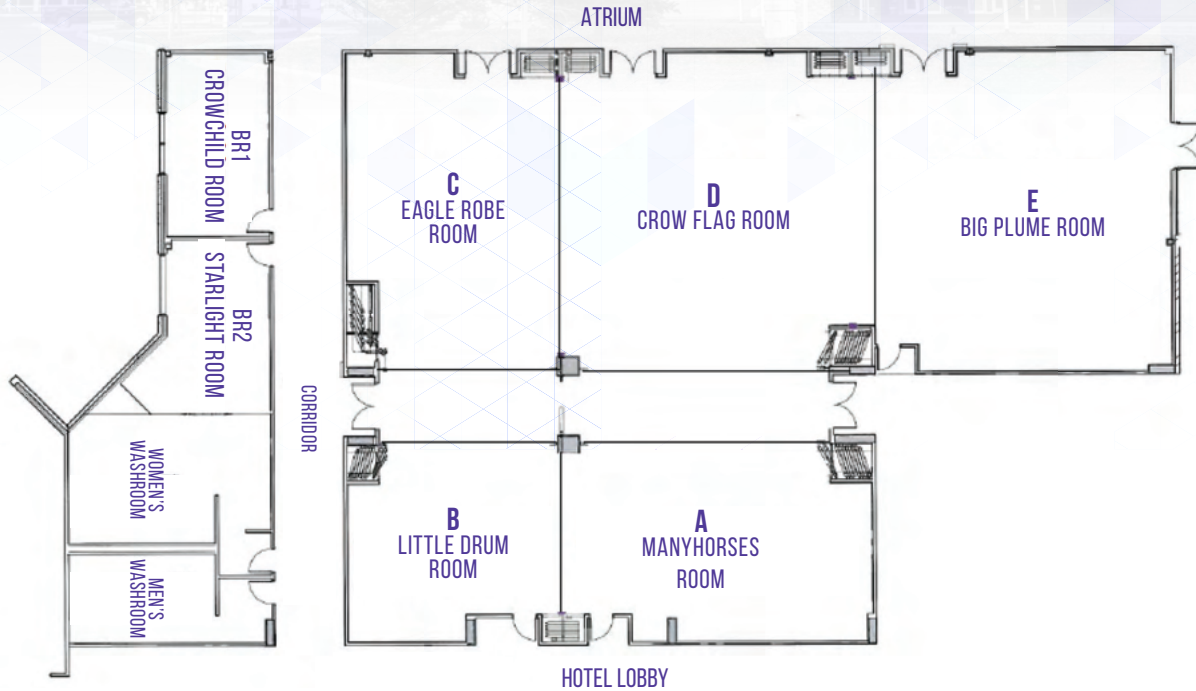




# EVENT SPACES

## FLOOR PLAN AND CAPACITY



ROOM NAME	HEIGHT	SIZE LXW	FT <sup>2</sup>	THEATRE / RECEPTION	CLASSROOM	U-SHAPE	BOARDROOM	BANQUET ROUNDS OF 8	CRESCENT ROUNDS OF 6	HOLLOW SQUARE
Atrium	--	--	N/A	Flow	N/A	N/A	N/A	N/A	N/A	N/A
Tsuut'ina Ballroom	12'	--	5,940	500	170	N/A	N/A	320	186	N/A
A – Manyhorses Room	12'	26 x 38	988	70	40	35	30	48	36	40
B – Little Drum Room	12'	26 x 25	663	50	27	16	16	24	18	18
C – Eagle Robe Room	12'	40 x 27	1,078	90	36	32	18	40	30	24
D– Crow Flag Room	12'	40 x 38	1,515	150	40	36	24	72	54	48
E – Big Plume Room	12'	40 x 42	1,695	150	40	36	24	80	60	48
AB	12'	26 x 63	1,651	150	80	N/A	50	72	54	N/A
CDE	12'	40 x 107	4,290	416	116	N/A	N/A	224	168	N/A
BBR 1 – Crowchild Room	12'	24 x 13	329	--	Permanent Boardroom for Maximum 10 Attendees – 78" Monitor					
BR 2 – Starlight Room	12'	22 x 13	346	--	Permanent Boardroom for Maximum 10 Attendees – 78" Monitor					
Event Centre	23'	208 x 112	20,000	2,600	800	N/A	N/A	800	600	N/A
Event Pre-Function	23'	30 x 200	6,000	1,000	N/A	N/A	N/A	N/A	N/A	N/A

Note: Event Centre can hold 1,000 attendees in rounds of 10.